

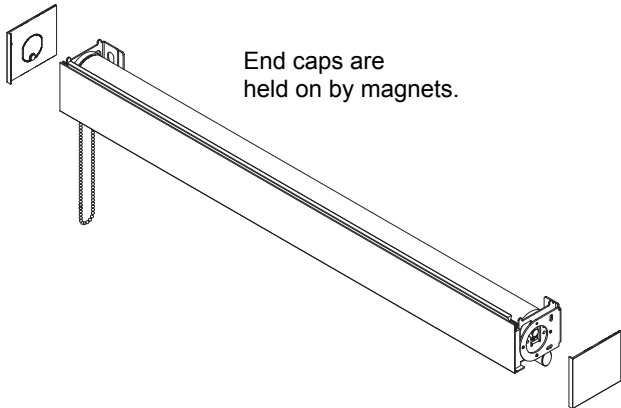
## QBASIC PLUS MOTOR CONVERSION KIT INSTALLATION INSTRUCTIONS

### IMPORTANT

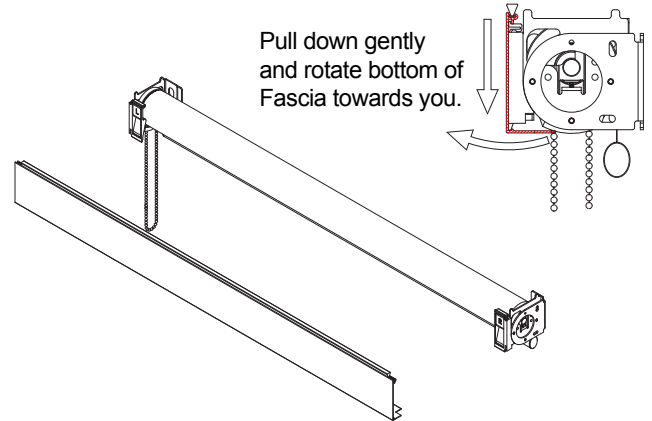
Read and understand all instructions before installing.

**NOTE:** If your shade does not have a fascia, you may skip Steps 1, 2, 3, and in step 10, install the shade without adding a fascia.

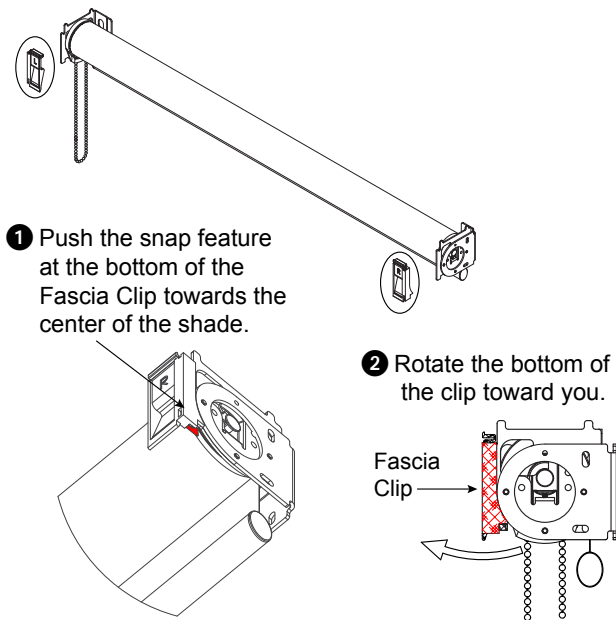
### Step 1 Remove the End Caps.



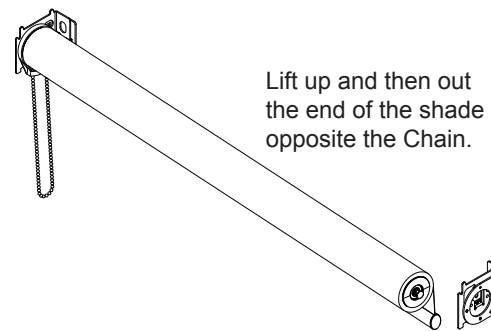
### Step 2 Remove the Fascia.



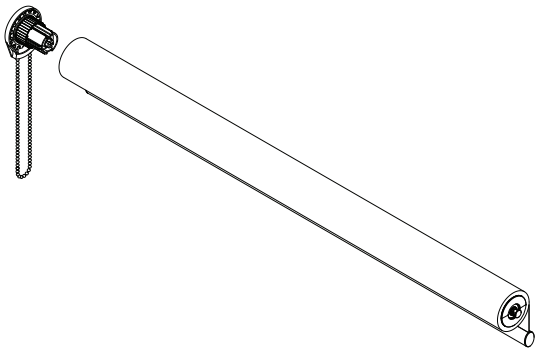
### Step 3 Remove the Fascia Clips.



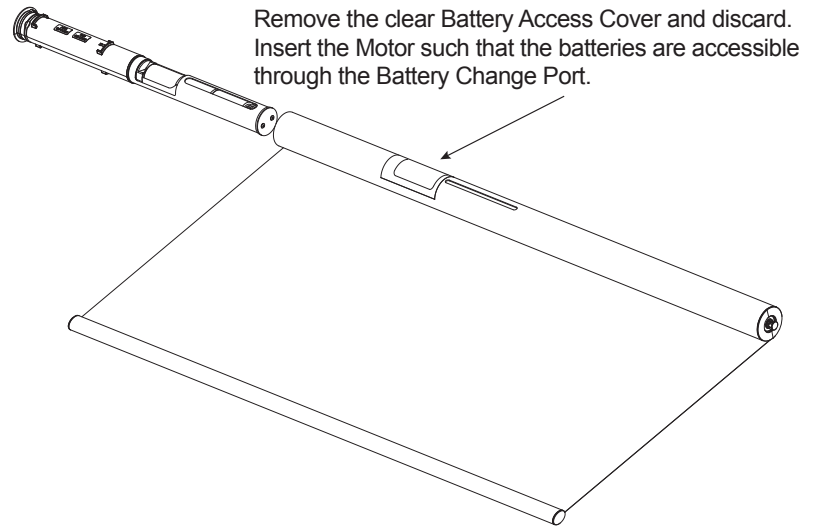
### Step 4 Remove the Shade.



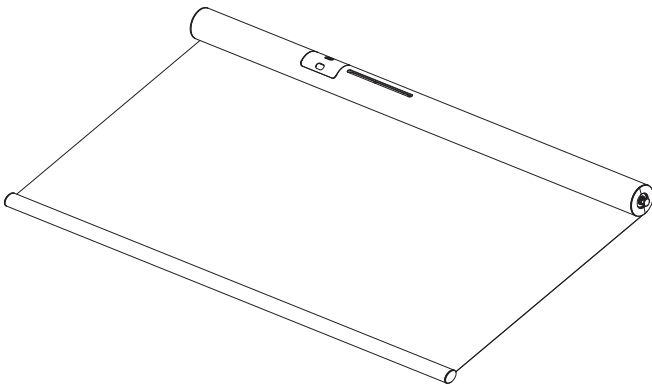
**Step 5 Remove the Clutch and Clutch Adapter.**



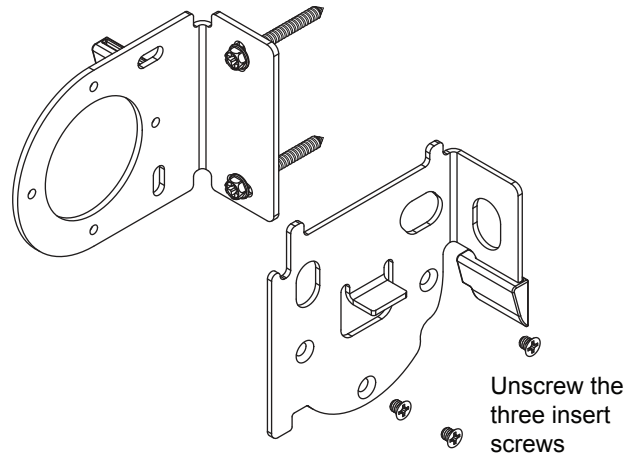
**Step 6 Insert the Motor**



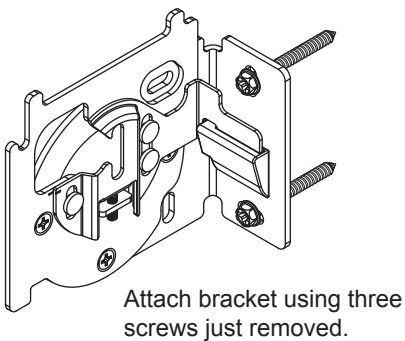
**Step 7 Install the included Battery Access Hole Cover as shown.**



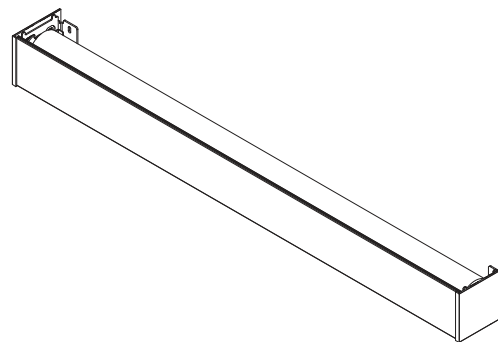
**Step 8 Remove the Manual Shade Bracket Insert.**



**Step 9 Install the Motorized Shade Bracket Insert**



**Step 10 Reinstall the Roller Shade, Fascia Clips, Fascia, and End Caps in this order.**



For more information visit us at [qmotionshades.com](http://qmotionshades.com) or call 877.849.6070

© 2018 QMotion. QMotion is a trademark. All rights reserved.